

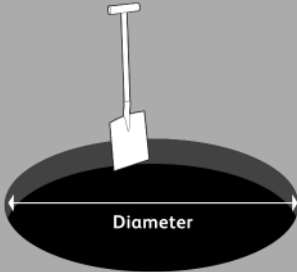


STEEL GARDEN EDGING

An installation video can be found on the EverEdge website. For any extra advice, please call us

EVEREDGE GARDEN RING INSTALLATION GUIDELINES

1

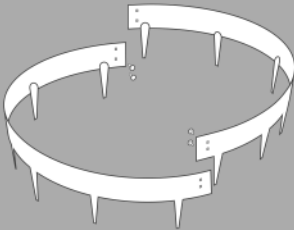


Firstly, prepare your turf area in accordance with the diameter of your Garden Ring.

- 2-piece approximately 600 mm diameter.
- 3-piece approximately 900 mm diameter.
- 4-piece* approximately 1200 mm diameter.
- 5-piece* approximately 1500 mm diameter.

* These pieces must be from the 900 mm diameter packs (the 600 mm diameter pieces are too tightly curved to expand to make larger circles).

2

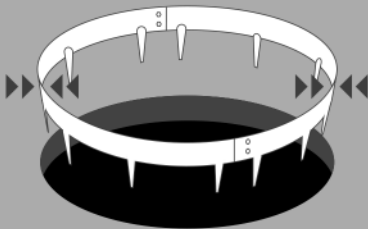


Using the coachbolts and nuts provided, assemble the Garden Ring.

The head of the coachbolts should face the side of the ring which will be visible after installation.

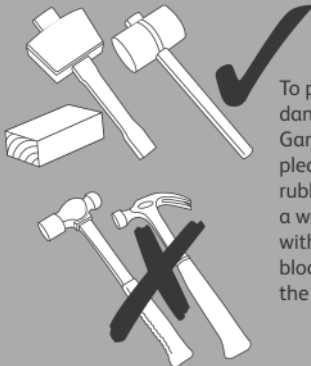
At this stage, the Garden Ring probably will not be the exact shape you require.

3



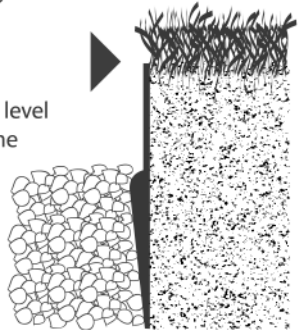
Because EverEdge is flexible, you will now be able to flex the ring gently to match your cut earth circle.

Using a wooden or rubber mallet and a timber block, (see below left) knock the Garden Ring firmly into place.



To prevent damage to the Garden Ring please use only a rubber mallet or a wooden mallet with a timber block to knock in the ring

NOTE: The top of the Garden Ring should be level with the point where the soil and grass meet



IMPORTANT

As with any sharp, pointed object, the spikes on the Garden Ring could cause injury if the product is handled carelessly